

快插式管接头 / ONE TOUCH FITTINGS

应用

- 快插式气管的连接用于导通压缩空气。
- 视用户环境而定，具有多种用途。

特点

- 适用性广，符合多种标准产品：BSPT（即PT斜螺纹）、BSPP（即G直螺纹）、NPT螺纹（即N螺纹）。
- 全流量：因接头内抓紧管子的卡簧及密封圈都在管的外部，且管不变形，故无流量损失。
- 绝佳气密性：螺纹截面有 O 形密封圈，且有特别优化的设计，使得管与接头的连接无论在静态或者动态下均能保持绝佳的密封效果。
- 安装方便，只需一次动作便可轻松连接或分立器官。
- 种类齐全，应用广泛。适用于各种工作场合，管外径有4, 5, 6, 8, 10, 12, 1/8"到1/2"，及公制M3, M5, M7, M10, M12等。可搭配三种不同的管类使用：尼龙管，PU管，特氟龙管。

使用范围

技术参数	B系列接头							
适用范围	压缩空气（不能是其他气体或液体）							
真空能力	755mmHg（99%真空）							
工作温度	-20—+80℃							
工作压力	工作温度为 0-10℃时，最大为 20Bar，最大工作压力与搭配的塑料管种类有关，还可以用于其他流体、水、切削油等。工作压力为 0-6/10Bar。							
使用材料	本体：尼龙 6.6加玻纤；卡簧：不锈钢；基座：黄铜镀镍；“O”型圈：丁腈橡胶（按需可用EPDM /FPM）							
推荐最大扭矩 (BSPP, M3, M5, M7)	螺纹	M3x0.5	M3x0.8	M7x1	G1/8"	G1*4"	G3/8"	G1*2"
	m. daN	0.06	0.16	0.8	0.8	1.2	3	3.5

产品编码系统

METRIC-BSPT(R)

BC 06 - 01 - N

One-Touch Fitting	Tube Dia	Thread Size	Plating
CODE	SIZE	METRIC THREAD	Nickel
04	Ø4	M5 M5X0.8	Sleeve Color Blue
06	Ø6	M6 M6X1.0	
08	Ø8	M12 M12X1.5	
10	Ø10	M14 M14X1.5	
12	Ø12	M16 M16X1.5	
14	Ø14	M22 M22X1.5	
16	Ø16		
R(P/T) THREAD		CODE	SIZE
		01	R1/8
		02	R1/4
		03	R3/8
		04	R1/2

METRIC-BSPP(G)

BC 06 - G01

One-Touch Fitting	Tube Dia	Thread Size	Sleeve Color
CODE	SIZE	G(PF) THREAD	Blue
04	Ø4	G01 G1/8	
06	Ø6	G02 G1/4	
08	Ø8	G03 G3/8	
10	Ø10	G04 G1/2	
12	Ø12		
14	Ø14		
16	Ø16		

INCH-NPT

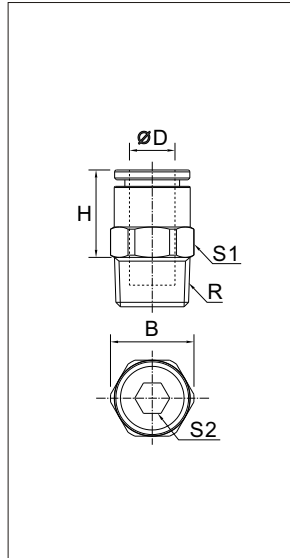
BC - 1/4 - N01

One-Touch Fitting	Tube Dia	Thread Size	Sleeve Color
CODE	SIZE	UNF THREAD	Black
5/32	Ø5/32	U 10-32UNF	
3/16	Ø3/16	NPT THREAD	
1/4	Ø1/4	N1 NPT1/8	
5/16	Ø5/16	CODE	SIZE
3/8	Ø3/8	N2 NPT1/4	
1/2	Ø1/2	N3 NPT3/8	
		N4 NPT1/2	

快插式管接头 / ONE TOUCH FITTINGS

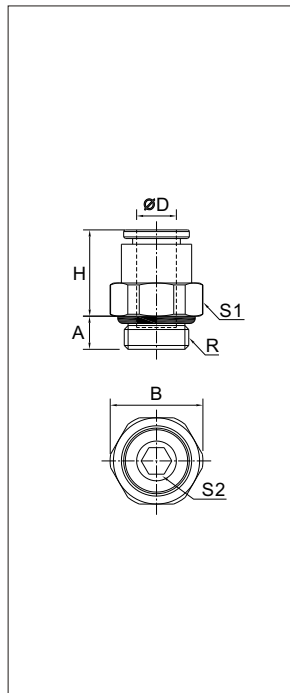
B 系列快速接头

BC 75 PT螺纹



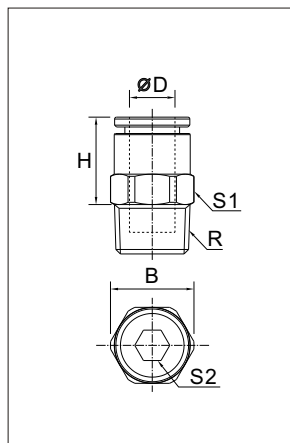
ØD	R	型号	S1	S2	B	H	Kg
3	R1/8	BC03-01	10	3	11	9.5	0.005
	R1/8	BC04-01	10	3	11	9.5	0.005
4	R1/4	BC04-02	14	3	15	6.5	0.012
	R3/8	BC04-03	17	3	18.5	8	0.024
6	R1/8	BC06-01	10	4	11	11.5	0.005
	R1/4	BC06-02	14	4	15	8.5	0.011
	R3/8	BC06-03	17	4	18.5	8.5	0.022
8	R1/2	BC06-04	21	4	23	9	0.043
	R1/8	BC08-01	13	5	14	20	0.011
	R1/4	BC08-02	14	6	15	17	0.014
	R3/8	BC08-03	17	6	18.5	13	0.021
10	R1/2	BC08-04	21	6	23	12	0.040
	R1/8	BC10-01	16	5	17.5	22.5	0.017
	R1/4	BC10-02	16	7	17.5	20	0.017
	R3/8	BC10-03	17	8	18.5	16.5	0.019
12	R1/2	BC10-04	21	8	23	14	0.037
	R1/4	BC12-02	19	7	21	26.5	0.029
	R3/8	BC12-03	19	9	21	24	0.028
	R1/2	BC12-04	21	10	23	19.5	0.036

BC 01 G螺纹



ØD	R	型号	S1	S2	A	B	H	Kg
3	M3x0.5	BC03-M3	8	-	2.5	8.5	14.5	0.003
	M5x0.8	BC03-M5	8	2.5	3	8.5	14	0.003
	G1/8	BC03-G01	13	3	4.5	14	11.5	0.007
4	M3x0.5	BC04-M3	8	-	2.5	8.5	14.5	0.003
	M5x0.8	BC04-M5	8	2.5	3	8.5	14	0.003
	G1/8	BC04-G01	13	3	4.5	14	11.5	0.007
	G1/4	BC04-G02	16	3	5.5	17.5	10.5	0.011
6	G3/8	BC04-G03	20	4	5.5	22	13	0.009
	M5x0.8	BC06-M5	10	2.5	3.5	11	16	0.005
	G1/8	BC06-G01	13	4	4.5	14	13	0.007
	G1/4	BC06-G02	16	4	5.5	17.5	12.5	0.011
8	G3/8	BC06-G03	20	4	5.5	22	13	0.009
	G1/2	BC06-G04	24	4	7.5	26	20	0.018
	G1/8	BC08-G01	13	5	4.5	14	20.5	0.011
	G1/4	BC08-G02	16	6	5.5	17.5	19.5	0.016
10	G3/8	BC08-G03	20	6	5.5	22	18	0.022
	G1/2	BC08-G04	24	6	7.5	26	16.5	0.018
	G1/8	BC10-G01	13	7	5.5	17.5	23	0.018
	G1/4	BC10-G02	16	7	5.5	17.5	23	0.018
12	G3/8	BC10-G03	20	8	5.5	22	19.5	0.021
	G1/2	BC10-G04	24	8	7.5	26	0.18	0.033
	G1/4	BC12-G02	19	7	5.5	21	27.5	0.027
	G3/8	BC12-G03	20	9	5.5	22	27	0.029
	G1/2	BC12-G04	24	10	7	26	22.5	0.035

BC 75 N螺纹

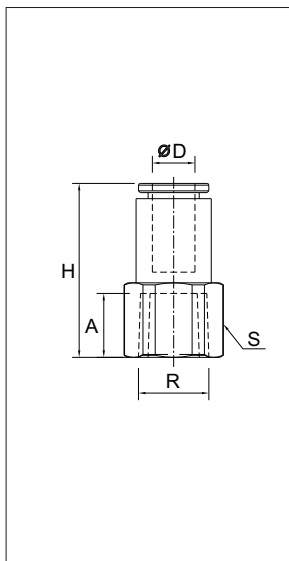


ØD	R	型号	S1	S2	B	H	Kg
1/8	10-32UNF	BC1/8-U10	8	2	8.5	8.5	0.005
	NPT1/8	BC1/8-N01	11	2	12	8.5	0.005
	NPT1/4	BC1/8-N02	14	2	15	9.5	0.012
	NPT3/8	BC1/8-N03	18	3	19.5	8	0.025
1/4	10-32UNF	BC1/8-U10	8	4	12	12	0.006
	NPT1/8	BC1/4-N01	11	4	12	12	0.006
	NPT1/4	BC1/4-N02	14	4	15	8.5	0.012
	NPT3/8	BC1/4-N03	18	5	19.5	8.5	0.024
3/8	NPT1/8	BC3/8-N01	16	4	17.5	22.7	0.019
	NPT1/4	BC3/8-N02	16	7	17.5	20.5	0.019
	NPT3/8	BC3/8-N03	18	7	20	17.5	0.026
	NPT1/2	BC3/8-N04	24	7	26	9	0.048
1/2	NPT1/4	BC1/2-N02	19	7	21	26.5	0.029
	NPT3/8	BC1/2-N03	19	9	21	24	0.030
	NPT1/2	BC1/2-N04	22	10	24	19.5	0.036

快插式管接头 / ONE TOUCH FITTINGS

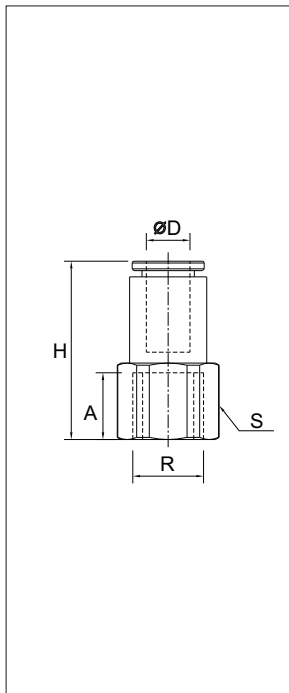
B 系列快速接头

BCF 14 PT螺纹



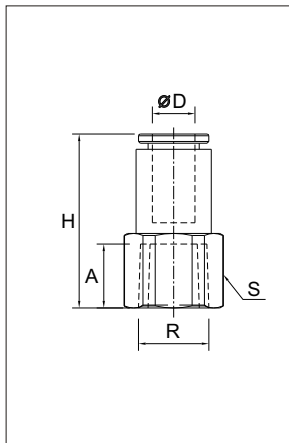
ØD	R	型号	A	S	H	Kg
3	R1/8	BCF03-01	9.5	13	22.5	0.010
	R1/8	BCF04-01	9.5	13	22.5	0.010
4	R1/4	BCF04-02	13.5	16	26.5	0.016
	R3/8	BCF04-03	14	19	28.5	0.021
6	R1/8	BCF06-01	9.5	13	24.5	0.011
	R1/4	BCF06-02	13.5	16	28.5	0.016
	R3/8	BCF06-03	14	19	28.5	0.021
8	R1/2	BCF06-04	19.5	24	28.5	0.024
	R1/8	BCF08-01	9.5	13	29	0.020
	R1/4	BCF08-02	13.5	16	36	0.027
	R3/8	BCF08-03	14	19	36	0.030
10	R1/2	BCF08-04	19.5	24	36	0.033
	R1/8	BCF10-01	9.5	13	32	0.033
	R1/4	BCF10-02	13.5	16	36	0.037
	R3/8	BCF10-03	14	19	36	0.040
12	R1/2	BCF10-04	19.5	24	41.5	0.045
	R1/4	BCF12-02	13.5	16	40	0.092
	R3/8	BCF12-03	14	19	40	0.092
	R1/2	BCF12-04	19.5	24	45.5	0.114

BCF 14 G螺纹



ØD	R	型号	A	S	H	Kg
3	M3x0.5	BCF03-M3	5.5	8	19.5	0.005
	M5x0.8	BCF03-M5	6.5	8	19.5	0.005
	G1/8	BCF03-G01	9.5	13	22.5	0.010
4	M3x0.5	BCF04-M3	5.5	8	19.5	0.005
	M5x0.8	BCF04-M5	6.5	8	19.5	0.005
	G1/8	BCF04-G01	9.5	13	22.5	0.010
	G1/4	BCF04-G02	13.5	16	26.5	0.016
6	G3/8	BCF04-G03	14	19	28.5	0.021
	M5x0.8	BCF06-M5	6.5	8	24.5	0.008
	G1/8	BCF06-G01	9.5	13	24.5	0.011
	G1/4	BCF06-G02	13.5	16	28.5	0.016
8	G3/8	BCF06-G03	14	19	28.5	0.021
	G1/2	BCF06-G04	19.5	24	28.5	0.024
	G1/8	BCF08-G01	9.5	13	29	0.020
	G1/4	BCF08-G02	13.5	16	36	0.027
10	G3/8	BCF08-G03	14	19	36	0.030
	G1/2	BCF08-G04	19.5	24	36	0.033
	G1/8	BCF10-G01	9.5	13	32	0.033
	G1/4	BCF10-G02	13.5	16	36	0.037
12	G3/8	BCF10-G03	14	19	36	0.040
	G1/2	BCF10-G04	19.5	24	41.5	0.045
	G1/4	BCF12-G02	13.5	16	40	0.092
	G3/8	BCF12-G03	14	19	40	0.092
	G1/2	BCF12-G04	19.5	24	45.5	0.114

BCF 14 N螺纹

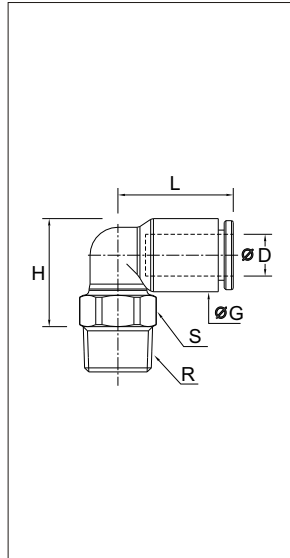


ØD	R	型号	A	S	H	Kg
1/8	10-32UNF	BCF1/8-U10	6.5	9	19.5	0.010
	NPT1/8	BCF1/8-N01	9.5	14	22.5	0.010
	NPT1/4	BCF1/8-N02	13.5	17.5	26.5	0.016
	NPT3/8	BCF1/8-N03	14	21	28.5	0.021
1/4	10-32UNF	BCF1/8-U10	6.5	9	24.5	0.011
	NPT1/8	BCF1/4-N01	9.5	14	24.5	0.011
	NPT1/4	BCF1/4-N02	13.5	17.5	28.5	0.016
	NPT3/8	BCF1/4-N03	14	21	28.5	0.021
3/8	NPT1/8	BCF3/8-N01	9.5	14	32	0.033
	NPT1/4	BCF3/8-N02	13.5	17.5	36	0.037
	NPT3/8	BCF3/8-N03	14	21	36	0.040
	NPT1/2	BCF1/4-N04	19.5	26	41.5	0.045
1/2	NPT1/4	BCF1/2-N02	13.5	17.5	40	0.092
	NPT3/8	BCF1/2-N03	14	21	40	0.092
	NPT1/2	BCF1/2-N04	19.5	26	45.5	0.114

快插式管接头 / ONE TOUCH FITTINGS

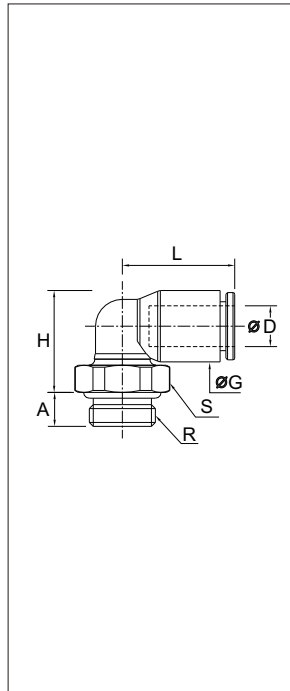
B 系列快速接头

BL 09 PT螺纹



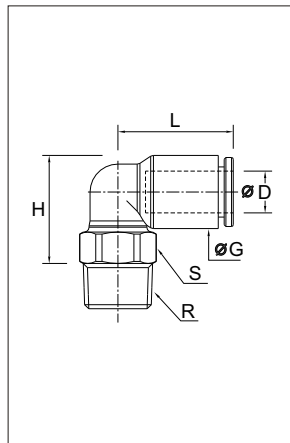
ØD	R	型号	S	ØG	H	L	Kg
3	R1/8	BL03-01	10	8.5	13.5	14	0.006
	R1/8	BL04-01	10	8.5	13.5	14	0.006
4	R1/4	BL04-02	14	8.5	14	14	0.012
	R3/8	BL04-03	17	8.5	13.5	14	0.024
6	R1/8	BL06-01	10	10.5	15.5	16	0.005
	R1/4	BL06-02	14	10.5	16	16	0.011
	R3/8	BL06-03	17	10.5	16	16	0.022
	R1/2	BL06-04	21	10.5	16.5	16.5	0.043
8	R1/8	BL08-01	10	13.5	19	19	0.011
	R1/4	BL08-02	14	13.5	18	18	0.014
	R3/8	BL08-03	17	13.5	18	18	0.021
	R1/2	BL08-04	21	13.5	19.5	19.5	0.040
10	R1/8	BL10-01	15	16	23	23	0.017
	R1/4	BL10-02	15	16	22	22	0.017
	R3/8	BL10-03	17	16	22	22	0.019
	R1/2	BL10-04	21	16	22	22	0.037
12	R1/4	BL12-02	17	19	25	25	0.029
	R3/8	BL12-03	21	19	25	25	0.028
	R1/2	BL12-04	21	19	25	25	0.036

BL 99 G螺纹



ØD	R	型号	A	S	ØG	H	L	Kg
3	M3x0.5	BL03-M3	2.5	8	8.5	15	14.5	0.002
	M5x0.8	BL03-M5	3.5	8	8.5	13.5	14	0.002
	G1/8	BL03-G01	5	13	8.5	13	14	0.006
4	M3x0.5	BL04-M3	2.5	8	8.5	15	14.5	0.002
	M5x0.8	BL04-M5	3.5	8	8.5	13.5	14	0.002
	G1/8	BL04-G01	5	13	8.5	13	14	0.006
	G1/4	BL04-G02	5.5	16	8.5	13	14	0.011
6	G3/8	BL04-G03	5.5	20	8.5	15.5	14	0.022
	M5x0.8	BL06-M5	3.5	8	10.5	15.5	16	0.003
	G1/8	BL06-G01	5	13	10.5	15	16	0.006
	G1/4	BL06-G02	5.5	16	10.5	15	16	0.011
8	G3/8	BL06-G03	5.5	20	10.5	15.5	16	0.022
	G1/2	BL06-G04	7	24	10.5	16	16	0.028
	G1/8	BL08-G01	5	13	13.5	20.5	23	0.009
	G1/4	BL08-G02	5.5	16	13.5	18.5	23	0.012
10	G3/8	BL08-G03	5.5	20	13.5	18.5	23	0.017
	G1/2	BL08-G04	7	24	13.5	19	23	0.027
	G1/8	BL10-G01	5	13	16	23.5	26.5	0.014
	G1/4	BL10-G02	5.5	16	16	23.5	26.5	0.014
12	G3/8	BL10-G03	5.5	20	16	22	26.5	0.017
	G1/2	BL10-G04	7	24	16	22	26.5	0.027
	G1/4	BL12-G02	5.5	16	19	26.5	31	0.016
	G3/8	BL12-G03	5.5	20	19	25	31	0.019
	G1/2	BL12-G04	7	24	19	25	31	0.029

BL 09 N螺纹

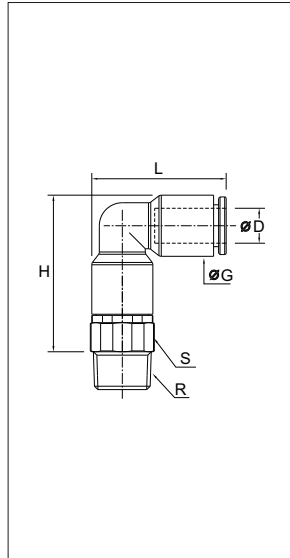


ØD	R	型号	S	ØG	H	L	Kg
1/8	10-32UNF	BL1/8-U10	5	8.4	13.5	14	0.007
	NPT1/8	BL1/8-N01	11	8.4	13.5	14	0.007
	NPT1/4	BL1/8-N02	14	8.4	14	14	0.016
	NPT3/8	BL1/8-N03	18	8.4	13.5	14	0.019
1/4	10-32UNF	BL1/4-U10	5	10.5	15.5	16	0.007
	NPT1/8	BL1/4-N01	11	10.5	15.5	16	0.007
	NPT1/4	BL1/4-N02	14	10.5	16	16	0.017
	NPT3/8	BL1/4-N03	18	10.5	16	16	0.021
3/8	NPT1/8	BL3/8-N01	15	13.5	23	26.5	0.015
	NPT1/4	BL3/8-N02	15	13.5	23	26.5	0.017
	NPT3/8	BL3/8-N03	18	13.5	22	26.5	0.024
	NPT1/2	BL1/4-N04	22	13.5	23	26.5	0.045
1/2	NPT1/4	BL1/2-N02	16	16	25	31	0.031
	NPT3/8	BL1/2-N03	18	16	25	31	0.050
	NPT1/2	BL1/2-N04	22	16	26	31	0.092

快插式管接头 / ONE TOUCH FITTINGS

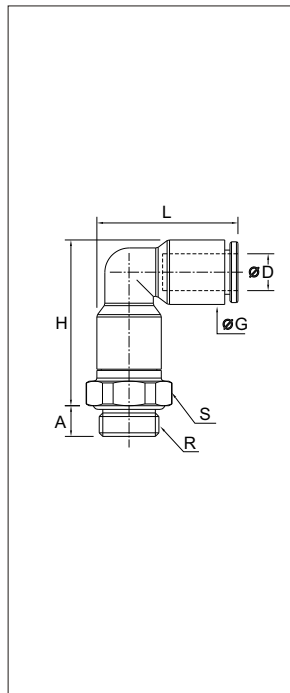
B 系列快速接头

BLL 29 PT螺纹



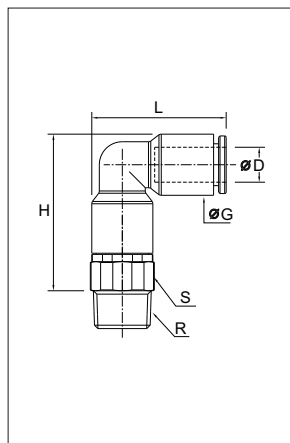
ØD	R	型号	S	ØG	H	L	Kg
3	R1/8	BLL03-01	10	8.5	23	19	0.021
	R1/8	BLL04-01	10	8.5	23	19	0.021
4	R1/4	BLL04-02	14	8.5	23.5	19	0.038
	R3/8	BLL04-03	17	8.5	23.5	19	0.038
6	R1/8	BLL06-01	10	10.5	27	22.5	0.037
	R1/4	BLL06-02	14	10.5	27.5	22.5	0.044
	R3/8	BLL06-03	17	10.5	28.5	22.5	0.046
8	R1/2	BLL06-04	21	10.5	28.5	22.5	0.046
	R1/8	BLL08-01	13	13.5	34.5	29.5	0.026
	R1/4	BLL08-02	14	13.5	32.5	29.5	0.031
10	R3/8	BLL08-03	17	13.5	33	29.5	0.041
	R1/2	BLL08-04	21	13.5	33	29.5	0.042
	R1/8	BLL10-01	13	16	39.5	34.5	0.031
12	R1/4	BLL10-02	15	16	39.5	34.5	0.035
	R3/8	BLL10-03	17	16	39.5	34.5	0.045
12	R1/2	BLL10-04	21	16	39.5	34.5	0.060
	R1/4	BLL12-02	19	19	45.5	40.5	0.060
	R3/8	BLL12-03	19	19	45.5	40.5	0.080
	R1/2	BLL12-04	21	19	45.5	40.5	0.095

BLL 69 G螺纹



ØD	R	型号	A	S	ØG	H	L	Kg
3	M3x0.5	BLL03-M3	2.5	8	8.5	22.5	19	0.009
	M5x0.8	BLL03-M5	3.5	8	8.5	23	19	0.009
	G1/8	BLL03-G01	5	13	8.5	22.5	19	0.009
4	M3x0.5	BLL04-M3	2.5	8	8.5	22.5	19	0.009
	M5x0.8	BLL04-M5	3.5	8	8.5	22.5	19	0.009
	G1/8	BLL04-G01	5	13	8.5	22.5	19	0.009
6	G1/4	BLL04-G02	5.5	16	8.5	22.5	19	0.014
	G3/8	BLL04-G03	5.5	20	8.5	22.5	19	0.025
	M5x0.8	BLL06-M5	3.5	10	10.5	27	23	0.009
8	G1/8	BLL06-G01	5	13	10.5	27	23	0.012
	G1/4	BLL06-G02	5.5	16	10.5	27	23	0.017
	G3/8	BLL06-G03	5.5	20	10.5	27.5	23	0.035
10	G1/2	BLL06-G04	7	24	10.5	28	23	0.035
	G1/8	BLL08-G01	5	13	13.5	36	29.5	0.025
	G1/4	BLL08-G02	5.5	16	13.5	33	29.5	0.026
12	G3/8	BLL08-G03	5.5	20	13.5	33	29.5	0.035
	G1/2	BLL08-G04	7	24	13.5	33	29.5	0.035
	G1/8	BLL10-G01	5	13	16	40.5	34.5	0.038
12	G1/4	BLL10-G02	5.5	16	16	40.5	34.5	0.038
	G3/8	BLL10-G03	5.5	20	16	40.5	34.5	0.040
	G1/2	BLL10-G04	7.5	24	16	40.5	34.5	0.042
12	G1/4	BLL12-G02	5.5	19	19	44.5	40.5	0.060
	G3/8	BLL12-G03	5.5	20	19	42	40.5	0.065
	G1/2	BLL12-G04	7.5	24	19	42	40.5	0.080

BLL 29 N螺纹

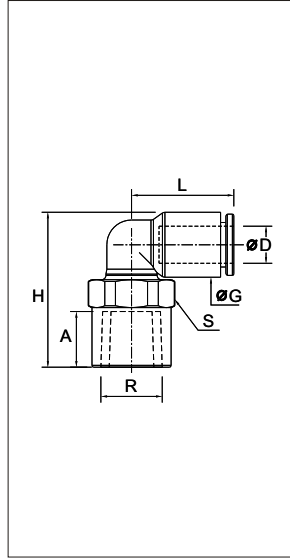


ØD	R	型号	S	ØG	H	L	Kg
1/8	10-32UNF	BLL1/8-U10	5	8.5	23	19	0.021
	NPT1/8	BLL1/8-N01	11	8.5	23	19	0.021
	NPT1/4	BLL1/8-N02	15	8.5	23.5	19	0.038
1/4	NPT3/8	BLL1/8-N03	18.5	8.5	23.5	19	0.038
	10-32UNF	BLL1/4-U10	5	10.5	27	22.5	0.037
	NPT1/8	BLL1/4-N01	10	10.5	27	22.5	0.037
3/8	NPT1/4	BLL1/4-N02	15	10.5	27.5	22.5	0.044
	NPT3/8	BLL1/4-N03	18.5	10.5	28.5	22.5	0.046
	NPT1/8	BLL3/8-N01	14	16	39.5	34.5	0.031
1/2	NPT1/4	BLL3/8-N02	16	16	39.5	34.5	0.035
	NPT3/8	BLL3/8-N03	18.5	16	39.5	34.5	0.045
	NPT1/2	BLL3/8-N04	23	16	39.5	34.5	0.060
1/2	NPT1/4	BLL1/2-N02	21	19	45.5	40.5	0.060
	NPT3/8	BLL1/2-N03	21	19	45.5	40.5	0.080
	NPT1/2	BLL1/2-N04	23	19	45.5	40.5	0.095

快插式管接头 / ONE TOUCH FITTINGS

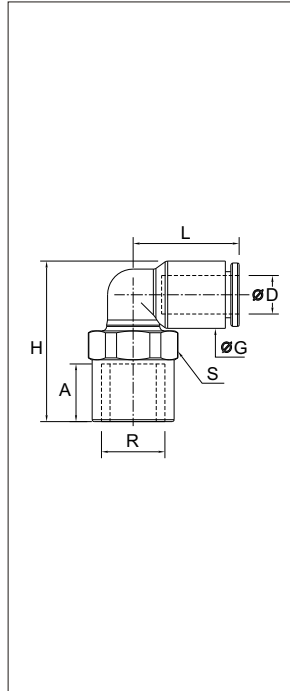
B 系列快速接头

BLF 92 PT螺纹



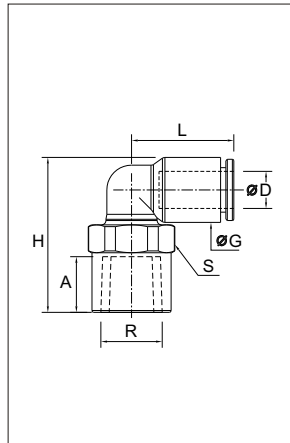
ØD	R	型号	A	S	ØG	H	L	Kg
3	R1/8	BLF03-01	8.5	13	8.5	23	14	0.012
	R1/8	BLF04-01	8.5	13	8.5	23	14	0.009
4	R1/4	BLF04-02	11.5	16	8.5	27	14	0.012
	R3/8	BLF04-03	12	20	8.5	28	14	0.017
	R1/8	BLF06-01	8.5	13	10.5	25	16	0.011
6	R1/4	BLF06-02	11.5	16	10.5	29	16	0.011
	R3/8	BLF06-03	12	20	10.5	30	16	0.017
	R1/2	BLF06-04	16	24	10.5	38	16	0.037
8	R1/8	BLF08-01	8.5	13	13.5	28	23	0.014
	R1/4	BLF08-02	11.5	16	13.5	32	23	0.017
	R3/8	BLF08-03	12	19	13.5	33	23	0.022
	R1/2	BLF08-04	16	24	13.5	41	23	0.037
10	R1/8	BLF10-01	8.5	13	16	32	26.5	0.029
	R1/4	BLF10-02	11	16	16	34.5	26.5	0.029
	R3/8	BLF10-03	12	19	16	35	26.5	0.034
	R1/2	BLF10-04	16	24	16	41	26.5	0.037
12	R1/4	BLF12-02	11	16	19	38	30.5	0.040
	R3/8	BLF12-03	12	19	19	38.5	30.5	0.041
	R1/2	BLF12-04	16	24	19	43.5	30.5	0.045

BLF 92 G螺纹



ØD	R	型号	A	S	ØG	H	L	Kg
3	M3x0.5	BLF03-M3	6.5	8	8.5	21	14	0.009
	M5x0.8	BLF03-M5	6.5	8	8.5	21	14	0.009
	G1/8	BLF03-G01	8.5	13	8.5	23	14	0.012
4	M3x0.5	BLF04-M3	6.5	8	8.5	21	14	0.009
	M5x0.8	BLF04-M5	6.5	8	8.5	21	14	0.009
	G1/8	BLF04-G01	8.5	13	8.5	23	14	0.009
	G1/4	BLF04-G02	11.5	16	8.5	27	14	0.012
6	G3/8	BLF04-G03	12	20	8.5	28	14	0.017
	M5x0.8	BLF06-M5	6.5	8	10.5	23	16	0.009
	G1/8	BLF06-G01	8.5	13	10.5	25	16	0.011
	G1/4	BLF06-G02	11.5	16	10.5	29	16	0.011
8	G3/8	BLF06-G03	12	20	10.5	30	16	0.017
	G1/2	BLF06-G04	16	24	10.5	38	16	0.037
	G1/8	BLF08-G01	8.5	13	13.5	28	23	0.014
	G1/4	BLF08-G02	11.5	16	13.5	32	23	0.017
10	G3/8	BLF08-G03	12	19	13.5	33	23	0.022
	G1/2	BLF08-G04	16	24	13.5	41	23	0.037
	G1/8	BLF10-G01	8.5	13	16	32	26.5	0.029
	G1/4	BLF10-G02	11	16	16	34.5	26.5	0.029
12	G3/8	BLF10-G03	12	19	16	35	26.5	0.034
	G1/2	BLF10-G04	16	24	16	41	26.5	0.037
	G1/4	BLF12-G02	11	16	19	38	30.5	0.040
12	G3/8	BLF12-G03	12	19	19	38.5	30.5	0.041
	G1/2	BLF12-G04	16	24	19	43.5	30.5	0.045

BLF 92 N螺纹

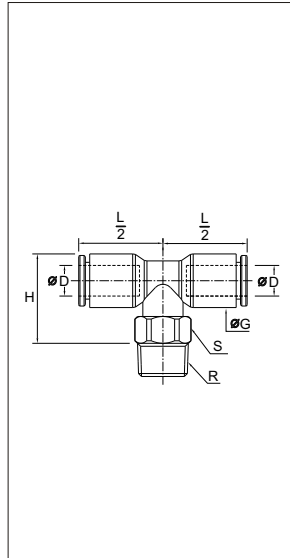


ØD	R	型号	A	S	ØG	H	L	Kg
1/8	10-32UNF	BLL1/8-U10	6.5	8	8.5	21	14	0.009
	NPT1/8	BLF1/8-N01	8.5	14	8.5	23	14	0.009
	NPT1/4	BLF1/8-N02	11.5	17.5	8.5	27	14	0.012
	NPT3/8	BLF1/8-N03	12	21	8.5	28	14	0.017
1/4	10-32UNF	BLL1/8-U10	6.5	8	10.5	23	16	0.011
	NPT1/8	BLF1/4-N01	8.5	14	10.5	25	16	0.011
	NPT1/4	BLF1/4-N02	11.5	17.5	10.5	29	16	0.011
	NPT3/8	BLF1/4-N03	12	21	10.5	30	16	0.017
3/8	NPT1/8	BLF3/8-N01	8.5	14	16	32	26.5	0.029
	NPT1/4	BLF3/8-N02	11	17.5	16	34.5	26.5	0.029
	NPT3/8	BLF3/8-N03	12	21	16	35	26.5	0.034
	NPT1/2	BLF3/8-N04	16	26	16	41	26.5	0.037
1/2	NPT1/4	BLF1/2-N02	11	17.5	19	38	30.5	0.040
	NPT3/8	BLF1/2-N03	12	21	19	38.5	30.5	0.041
	NPT1/2	BLF1/2-N04	16	26	19	43.5	30.5	0.045

快插式管接头 / ONE TOUCH FITTINGS

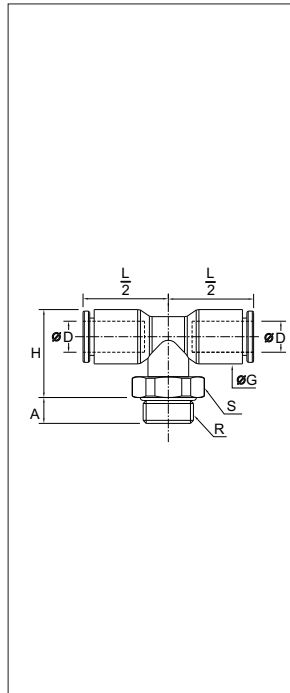
B 系列快速接头

BT 08 PT螺纹



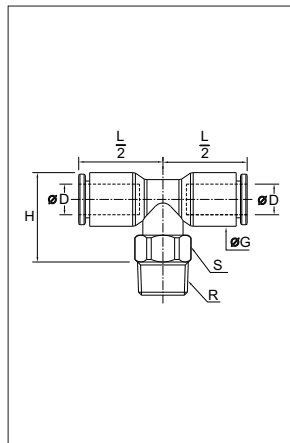
ØD	R	型号	S	ØG	H	L/2	Kg
3	R1/8	BT03-01	10	8.5	15.5	14	0.007
	R1/8	BT04-01	10	8.5	15.5	14	0.007
4	R1/4	BT04-02	14	8.5	16	14	0.015
	R3/8	BT04-03	17	8.5	16	14	0.015
6	R1/8	BT06-01	10	10.5	17.5	16	0.009
	R1/4	BT06-02	14	10.5	18	16	0.017
	R3/8	BT06-03	17	10.5	18	16	0.019
	R1/2	BT06-04	21	10.5	18	16	0.019
8	R1/8	BT08-01	10	13.5	22	23	0.016
	R1/4	BT08-02	14	13.5	21	23	0.019
	R3/8	BT08-03	17	13.5	21	23	0.020
	R1/2	BT08-04	21	13.5	21	23	0.020
10	R1/8	BT10-01	10	16	24	26.5	0.021
	R1/4	BT10-02	15	16	24	26.5	0.021
	R3/8	BT10-03	17	16	24	26.5	0.024
	R1/2	BT10-04	21	16	24	26.5	0.028
12	R1/4	BT12-02	15	19	27	31	0.040
	R3/8	BT12-03	17	19	27	31	0.092
	R1/2	BT12-04	21	19	27	31	0.109

BT 98 G螺纹



ØD	R	型号	A	S	ØG	H	L/2	Kg
3	M3x0.5	BT03-M3	2.5	8	8.5	17.5	14	0.004
	M5x0.8	BT03-M5	3.5	8	8.5	17.5	14	0.004
	G1/8	BT03-G01	5	13	8.5	15	14	0.008
4	M3x0.5	BT04-M3	2.5	8	8.5	17.5	14	0.004
	M5x0.8	BT04-M5	3.5	8	8.5	17.5	14	0.004
	G1/8	BT04-G01	5	13	8.5	15	14	0.008
	G1/4	BT04-G02	5.5	16	8.5	15	14	0.013
6	G3/8	BT04-G03	5.5	20	8.5	15	14	0.015
	M5x0.8	BT06-M5	3.5	8	10.5	19.5	16	0.006
	G1/8	BT06-G01	5	13	10.5	17	16	0.010
	G1/4	BT06-G02	5.5	16	10.5	17	16	0.015
8	G3/8	BT06-G03	5.5	20	10.5	17	16	0.017
	G1/2	BT06-G04	7.5	24	10.5	17	16	0.019
	G1/8	BT08-G01	4.5	13	13.5	23.5	23	0.017
	G1/4	BT08-G02	5.5	16	13.5	21.5	23	0.020
10	G3/8	BT08-G03	5.5	20	13.5	21.5	23	0.023
	G1/2	BT08-G04	7.5	24	13.5	21.5	23	0.026
	G1/8	BT10-G01	5	13	16	26	26.5	0.021
	G1/4	BT10-G02	5.5	16	16	26	26.5	0.021
12	G3/8	BT10-G03	5.5	20	16	24	26.5	0.024
	G1/2	BT10-G04	7.5	24	16	24	26.5	0.039
	G1/4	BT12-G02	5.5	16	19	29	31	0.088
	G3/8	BT12-G03	5.5	20	19	27	31	0.081
	G1/2	BT12-G04	7.5	24	19	27	31	0.092

BT 08 N螺纹

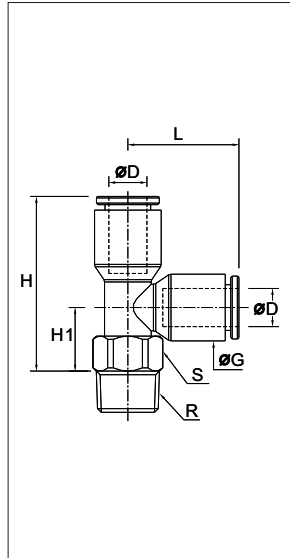


ØD	R	型号	S	ØG	H	L/2	Kg
1/8	10-32UNF	BT1/8-U10	8	8.5	15.5	14	0.004
	NPT1/8	BT1/8-N01	11	8.5	15.5	14	0.007
	NPT1/4	BT1/8-N02	15	8.5	16	14	0.015
	NPT3/8	BT1/8-N03	18.5	8.5	16	14	0.015
1/4	10-32UNF	BT1/8-U10	8	10.5	17.5	16	0.004
	NPT1/8	BT1/4-N01	11	10.5	17.5	16	0.009
	NPT1/4	BT1/4-N02	15	10.5	18	16	0.017
	NPT3/8	BT1/4-N03	18.5	10.5	18	16	0.019
3/8	NPT1/8	BT3/8-N01	11	16	24	26.5	0.021
	NPT1/4	BT3/8-N02	15	16	24	26.5	0.021
	NPT3/8	BT3/8-N03	18.5	16	24	26.5	0.024
	NPT1/2	BT3/8-N04	23	16	24	26.5	0.028
1/2	NPT1/4	BT1/2-N02	15	19	27	31	0.040
	NPT3/8	BT1/2-N03	18.5	19	27	31	0.092
	NPT1/2	BT1/2-N04	23	19	27	31	0.109

快插式管接头 / ONE TOUCH FITTINGS

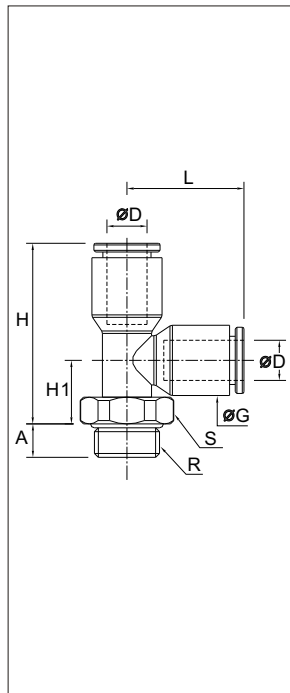
B 系列快速接头

BST 03 PT螺纹



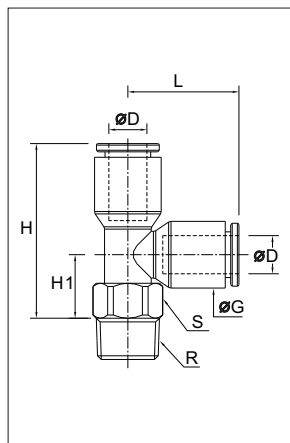
ØD	R	型号	S	ØG	H	H1	L	Kg
3	R1/8	BST03-01						
	R1/8	BST04-01						
4	R1/4	BST04-02						
	R3/8	BST04-03						
6	R1/8	BST06-01	10	10.5	27.5	10	17.5	0.009
	R1/4	BST06-02	14	10.5	28	10.5	17.5	0.017
	R3/8	BST06-03	17	10.5	28	10.5	17.5	0.019
8	R1/2	BST06-04	21	10.5	28	10.5	17.5	0.019
	R1/8	BST08-01						
	R1/4	BST08-02						
10	R3/8	BST08-03						
	R1/2	BST08-04						
	R1/8	BST10-01						
12	R1/4	BST10-02						
	R3/8	BST10-03						
12	R1/2	BST10-04						
	R1/4	BST12-02						
	R3/8	BST12-03						
	R1/2	BST12-04						

BST 93 G螺纹



ØD	R	型号	A	S	ØG	H	H1	L	Kg
3	M3x0.5	BST03-M3							
	M5x0.8	BST03-M5							
	G1/8	BST03-G01							
4	M3x0.5	BST04-M3							
	M5x0.8	BST04-M5							
	G1/8	BST04-G01							
6	G1/4	BST04-G02							
	G3/8	BST04-G03							
	M5x0.8	BST06-M5	3.5	8	10.5	29.5	12.5	17.5	0.007
8	G1/8	BST06-G01	5	13	10.5	27	10	17.5	0.010
	G1/4	BST06-G02	5.5	16	10.5	27	10	17.5	0.015
	G3/8	BST06-G03	5.5	20	10.5	27	10	17.5	0.015
10	G1/2	BST06-G04	7.5	24	10.5	27	10	17.5	0.017
	G1/8	BST08-G01							
	G1/4	BST08-G02							
12	G3/8	BST08-G03							
	G1/2	BST08-G04							
	G1/8	BST10-G01							
12	G1/4	BST10-G02							
	G3/8	BST10-G03							
	G1/2	BST10-G04							
12	G1/4	BST12-G02							
	G3/8	BST12-G03							
	G1/2	BST12-G04							

BST 03 N螺纹

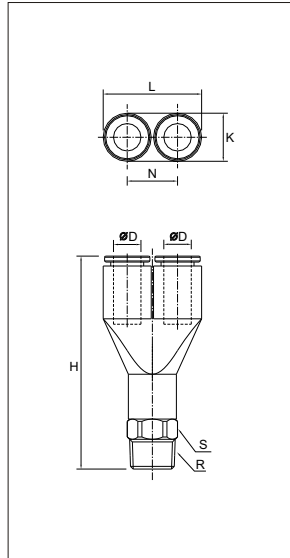


ØD	R	型号	S	ØG	H	H1	L	Kg
1/8	10-32UNF	BST1/8-U10						
	NPT1/8	BST1/8-N01						
	NPT1/4	BST1/8-N02						
1/4	NPT3/8	BST1/8-N03						
	10-32UNF	BST1/8-U10	8	8.5	29.5	10	17.5	0.009
	NPT1/8	BST1/4-N01	11	10.5	27.5	10	17.5	0.009
3/8	NPT1/4	BST1/4-N02	15	10.5	28	10.5	17.5	0.017
	NPT3/8	BST1/4-N03	18.5	10.5	28	10.5	17.5	0.019
	NPT1/8	BST3/8-N01						
1/2	NPT1/4	BST3/8-N02						
	NPT3/8	BST3/8-N03						
	NPT1/2	BST3/8-N04						
1/2	NPT1/4	BST1/2-N02						
	NPT3/8	BST1/2-N03						
	NPT1/2	BST1/2-N04						

快插式管接头 / ONE TOUCH FITTINGS

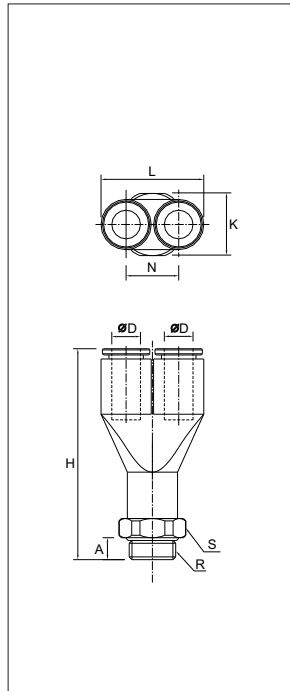
B 系列快速接头

BWT 48 PT螺纹



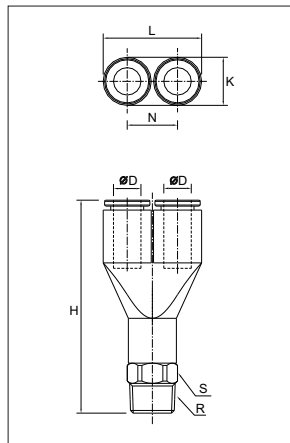
ØD	R	型号	S	H	K	L	N	Kg
3	R1/8	BWT03-01	10	32.5	8.5	17.5	9	0.010
	R1/8	BWT04-01	10	32.5	8.5	17.5	9	0.010
4	R1/4	BWT04-02	14	33	8.5	17.5	9	0.018
	R3/8	BWT04-03	17	33	8.5	17.5	9	0.018
6	R1/8	BWT06-01	10	39.5	10.5	21.5	11	0.012
	R1/4	BWT06-02	14	40	10.5	21.5	11	0.019
	R3/8	BWT06-03	17	40	10.5	21.5	11	0.021
8	R1/2	BWT06-04	21	40	10.5	21.5	11	0.021
	R1/8	BWT08-01	13	56.5	13.5	28	14.5	0.033
	R1/4	BWT08-02	14	55.5	13.5	28	14.5	0.037
	R3/8	BWT08-03	16	48.5	13.5	28	14.5	0.040
10	R1/2	BWT08-04	20	48.5	13.5	28	14.5	0.040
	R1/8	BWT10-01	13	60	19	39	20	0.040
	R1/4	BWT10-02	14	60	19	39	20	0.040
	R3/8	BWT10-03	16	60.5	19	39	20	0.043
12	R1/2	BWT10-04	20	61	19	39	20	0.045
	R1/4	BWT12-02	14	66	19	39	20	0.045
	R3/8	BWT12-03	19	66	19	39	20	0.045
	R1/2	BWT12-04	21	66	19	39	20	0.047

BWT 58 G螺纹



ØD	R	型号	A	S	H	K	L	N	Kg
3	M3x0.5	BWT03-M3	2.5	8	32.5	8.5	17.5	9	0.010
	M5x0.8	BWT03-M5	3.5	8	32.5	8.5	17.5	9	0.010
	G1/8	BWT03-G01	5	13	32	8.5	17.5	9	0.010
4	M3x0.5	BWT04-M3	2.5	8	32.5	8.5	17.5	9	0.010
	M5x0.8	BWT04-M5	3.5	8	32.5	8.5	17.5	9	0.010
	G1/8	BWT04-G01	5	13	32	8.5	17.5	9	0.010
	G1/4	BWT04-G02	5.5	16	32	8.5	17.5	9	0.015
6	G3/8	BWT04-G03	5.5	20	32	8.5	17.5	9	0.015
	M5x0.8	BWT06-M5	3.5	10	39.5	10.5	21.5	11	0.011
	G1/8	BWT06-G01	5	13	39	10.5	21.5	11	0.014
	G1/4	BWT06-G02	5.5	16	39	10.5	21.5	11	0.019
8	G3/8	BWT06-G03	5.5	20	39	10.5	21.5	11	0.021
	G1/2	BWT06-G04	7.5	24	39	10.5	21.5	11	0.021
	G1/8	BWT08-G01	5	13	56	13.5	28	14.5	0.033
	G1/4	BWT08-G02	5.5	16	55	13.5	28	14.5	0.039
10	G3/8	BWT08-G03	6	19	54	13.5	28	14.5	0.040
	G1/2	BWT08-G04	7	24	54	13.5	28	14.5	0.040
	G1/8	BWT10-G01	5	13	63.5	16	33	17	0.040
	G1/4	BWT10-G02	5.5	16	63.5	16	33	17	0.043
12	G3/8	BWT10-G03	6	20	63.5	16	33	17	0.043
	G1/2	BWT10-G04	7	24	65	16	33	17	0.045
	G1/4	BWT12-G02	5.5	16	68	19	39	20	0.045
	G3/8	BWT12-G03	6	20	68	19	39	20	0.045
	G1/2	BWT12-G04	7	24	70	19	39	20	0.047

BWT 48 N螺纹

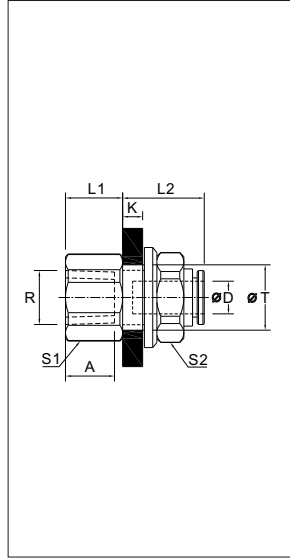


ØD	R	型号	S	H	K	L	N	Kg
1/8	10-32UNF	BWT1/8-U10	8	32.5	8.5	17.5	9	0.010
	NPT1/8	BWT1/8-N01	10	32.5	8.5	17.5	9	0.010
	NPT1/4	BWT1/8-N02	14	33	8.5	17.5	9	0.018
1/4	NPT3/8	BWT1/8-N03	17	33	8.5	17.5	9	0.018
	10-32UNF	BWT1/4-U10	8	39.5	10.5	21.5	11	0.012
	NPT1/8	BWT1/4-N01	10	39.5	10.5	21.5	11	0.012
3/8	NPT1/4	BWT1/4-N02	14	40	10.5	21.5	11	0.019
	NPT3/8	BWT1/4-N03	17	40	10.5	21.5	11	0.021
	NPT1/8	BWT3/8-N01	13	60	19	39	20	0.040
	NPT1/4	BWT3/8-N02	14	60	19	39	20	0.040
1/2	NPT3/8	BWT3/8-N03	16	60.5	19	39	20	0.043
	NPT1/2	BWT3/8-N04	20	61	19	39	20	0.045
	NPT1/4	BWT1/2-N02	14	66	19	39	20	0.045
	NPT3/8	BWT1/2-N03	19	66	19	39	20	0.045
	NPT1/2	BWT1/2-N04	21	66	19	39	20	0.047

快插式管接头 / ONE TOUCH FITTINGS

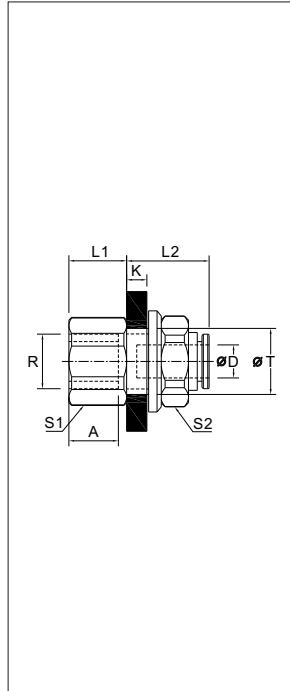
B 系列快速接头

BMF 36 PT螺纹



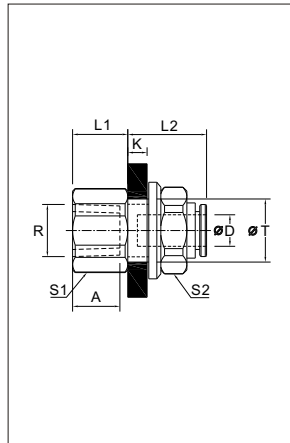
ØD	R	型号	A	S1	S2	K	L1	L2	T	Kg
3	R1/8	BMF03-01	9.5	13	13	7	17	11.5	10.5	0.025
	R1/8	BMF04-01	9.5	13	13	7	17	11.5	10.5	0.025
4	R1/4	BMF04-02	13.5	13	16	7	17	15.5	10.5	0.028
	R3/8	BMF04-03	9.5	13	16	7	17	15.5	10.5	0.028
6	R1/8	BMF06-01	9.5	15	15	8	19	10.5	12.5	0.035
	R1/4	BMF06-02	13.5	15	17	7	19	15.5	12.5	0.040
	R3/8	BMF06-03	12	15	22	8	19	16	12.5	0.041
	R1/2	BMF06-04	19.5	15	22	8	19	16.0	12.5	0.041
8	R1/8	BMF08-01	9.5	18	17	8	20.5	10.5	15.5	0.048
	R1/4	BMF08-02	13.5	18	17	8	20.5	14.5	15.5	0.055
	R3/8	BMF08-03	14	18	17	8	20.5	14.5	15.5	0.060
	R1/2	BMF08-04	19.5	18	17	8	20.5	14.5	15.5	0.060
10	R1/8	BMF10-01	9.5	22	22	8.5	23	14.5	18.5	0.063
	R1/4	BMF10-02	13.5	22	22	8.5	23	14.5	18.5	0.063
	R3/8	BMF10-03	14	22	22	8.5	23	16	19	0.073
	R1/2	BMF10-04	19.5	22	22	8.5	23	16	18.5	0.073
12	R1/4	BMF12-02	13.5	26	25	8.5	27	16	22.5	0.092
	R3/8	BMF12-03	14	26	25	8.5	27	16	22.5	0.092
	R1/2	BMF12-04	19.5	26	27	8.5	27	21.5	22.5	0.118

BMF 36 G螺纹



ØD	R	型号	A	S1	S2	K	L1	L2	T	Kg
3	M3x0.5	BMF03-M3	6.5	13	13	7	17	11.5	10.5	0.018
	M5x0.8	BMF03-M5	6.5	13	13	7	17	11.5	10.5	0.018
	G1/8	BMF03-G01	9.5	13	13	7	17	11.5	10.5	0.025
4	M3x0.5	BMF04-M3	6.5	13	13	7	17	11.5	10.5	0.018
	M5x0.8	BMF04-M5	6.5	13	13	7	17	11.5	10.5	0.018
	G1/8	BMF04-G01	9.5	13	13	7	17	11.5	10.5	0.025
6	G1/4	BMF04-G02	13.5	13	16	7	17	15.5	10.5	0.028
	G3/8	BMF04-G03	9.5	13	16	7	17	15.5	10.5	0.028
	M5x0.8	BMF06-M5	6.5	15	15	8	19	10.5	12.5	0.028
	G1/8	BMF06-G01	9.5	15	15	8	19	10.5	12.5	0.035
8	G1/4	BMF06-G02	13.5	15	17	7	19	15.5	12.5	0.040
	G3/8	BMF06-G03	12	15	22	8	19	16	12.5	0.041
	G1/2	BMF06-G04	19.5	15	22	8	19	16.0	12.5	0.041
	G1/8	BMF08-G01	9.5	18	17	8	20.5	10.5	15.5	0.048
10	G1/4	BMF08-G02	13.5	18	17	8	20.5	14.5	15.5	0.055
	G3/8	BMF08-G03	14	18	17	8	20.5	14.5	15.5	0.060
	G1/2	BMF08-G04	19.5	18	17	8	20.5	14.5	15.5	0.060
	G1/8	BMF10-G01	9.5	22	22	8.5	23	14.5	18.5	0.063
12	G1/4	BMF10-G02	13.5	22	22	8.5	23	14.5	18.5	0.063
	G3/8	BMF10-G03	14	22	22	8.5	23	16	19	0.073
	G1/2	BMF10-G04	19.5	22	22	8.5	23	16	18.5	0.073
	G1/4	BMF12-G02	13.5	26	25	8.5	27	16	22.5	0.092
	G3/8	BMF12-G03	14	26	25	8.5	27	16	22.5	0.092
	G1/2	BMF12-G04	19.5	26	27	8.5	27	21.5	22.5	0.118

BMF 36 N螺纹

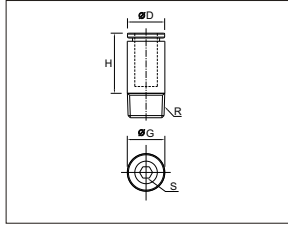


ØD	R	型号	A	S1	S2	K	L1	L2	T	Kg
1/8	10-32UNF	BMF1/8-U10	7	13	13	7	17	11.5	10.5	0.025
	NPT1/8	BMF1/8-N01	11	13	13	7	17	11.5	10.5	0.025
	NPT1/4	BMF1/8-N02	14	13	16	7	17	15.5	10.5	0.028
	NPT3/8	BMF1/8-N03	11	13	16	7	17	15.5	10.5	0.028
1/4	10-32UNF	BMF1/8-U10	7	15	15	8	19	10.5	12.5	0.035
	NPT1/8	BMF1/4-N01	11	15	15	8	19	10.5	12.5	0.035
	NPT1/4	BMF1/4-N02	14	15	17	7	19	15.5	12.5	0.040
	NPT3/8	BMF1/4-N03	13	15	22	8	19	16	12.5	0.041
3/8	NPT1/8	BMF3/8-N01	11	22	22	8.5	23	14.5	18.5	0.063
	NPT1/4	BMF3/8-N02	14	22	22	8.5	23	14.5	18.5	0.063
	NPT3/8	BMF3/8-N03	15	22	22	8.5	23	16	19	0.073
	NPT1/2	BMF3/8-N04	21	22	22	8.5	23	16	18.5	0.073
1/2	NPT1/4	BMF1/2-N02	14	26	25	8.5	27	16	22.5	0.092
	NPT3/8	BMF1/2-N03	15	26	25	8.5	27	16	22.5	0.092
	NPT1/2	BMF1/2-N04	21	26	27	8.5	27	21.5	22.5	0.118

快插式管接头 / ONE TOUCH FITTINGS

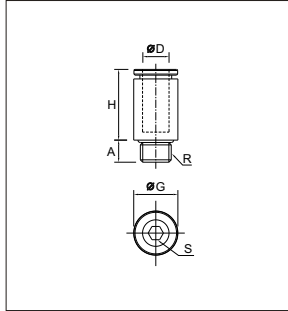
B 系列快速接头

BOC 81 PT螺纹



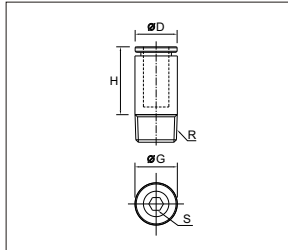
∅D	R	型号	S	∅G	H	Kg
3	R1/8	BOC03-01	3	10	14	0.005
	R1/8	BOC04-01	3	10	14	0.005
4	R1/4	BOC04-02	3	10	14	0.005
	R3/8	BOC04-03	3	10	14	0.005
6	R1/8	BOC06-01	4	10	16	0.006
	R1/4	BOC06-02	4	10	16	0.006

BOC 81 G螺纹



∅D	R	型号	A	S	∅G	H	Kg
3	M3x0.5	BOC03-M3	2.5	-	10	14	0.005
	M5x0.8	BOC03-M5	3	2.5	10	14	0.005
	G1/8	BOC03-G01	4.5	3	10	14	0.005
4	M3x0.5	BOC04-M3	2.5	-	10	14	0.005
	M5x0.8	BOC04-M5	3	2.5	10	14	0.005
	G1/8	BOC04-G01	4.5	3	10	14	0.005
	G1/4	BOC04-G02	5.5	3	10	14	0.005
6	G3/8	BOC04-G03	5.5	3	10	14	0.005
	M5x0.8	BOC06-M5	3.5	2.5	10	16	0.006
	G1/8	BOC06-G01	4.5	4	10	16	0.006
	G1/4	BOC06-G02	5.5	4	10	16	0.006

BOC 81 NPT螺纹

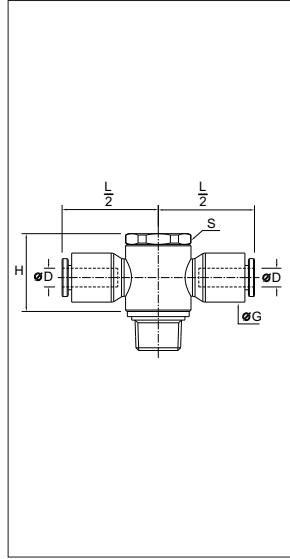


∅D	R	型号	S	∅G	H	Kg
1/8	10-32UNF	BOC1/8-U10	2.5	10	14	0.005
	NPT1/8	BOC1/8-N01	3	10	14	0.005
	NPT1/4	BOC1/8-N02	3	10	14	0.005
	NPT3/8	BOC1/8-N03	3	10	14	0.005
1/4	10-32UNF	BOC1/8-U10	3	10	14	0.005
	NPT1/8	BOC1/4-N01	4	10	16	0.006
	NPT1/4	BOC1/4-N02	4	10	16	0.006

快插式管接头 / ONE TOUCH FITTINGS

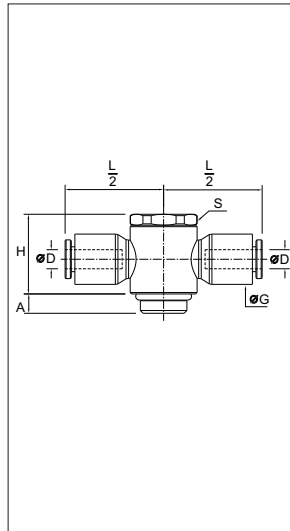
B 系列快速接头

BGT 19 PT螺纹



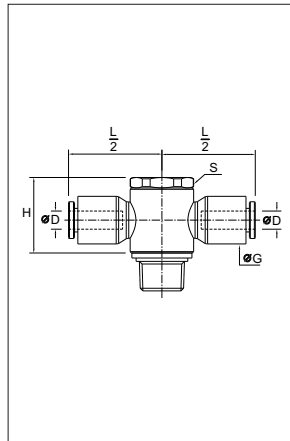
ØD	R	型号	S	ØG	H	L/2	Kg
4	R1/8	BGT04-01					
	R1/4	BGT04-02					
	R3/8	BGT04-03					
6	R1/8	BGT06-01					
	R1/4	BGT06-02	17	13.5	21	26.5	0.031
	R3/8	BGT06-03					
	R1/2	BGT06-04					
8	R1/8	BGT08-01					
	R1/4	BGT08-02	13	11	17	20	0.024
	R3/8	BGT08-03					
	R1/2	BGT08-04					
10	R1/8	BGT10-01					
	R1/4	BGT10-02					
	R3/8	BGT10-03	20	16	24.5	31	0.045
	R1/2	BGT10-04					
12	R1/4	BGT12-02					
	R3/8	BGT12-03	20	19	24.5	31	0.045
	R1/2	BGT12-04					

BGT 19 G螺纹



ØD	R	型号	A	S	ØG	H	L/2	Kg
4	M3x0.5	BGT04-M3						
	M5x0.8	BGT04-M5						
	G1/8	BGT04-G01						
	G1/4	BGT04-G02						
6	G3/8	BGT04-G03						
	M5x0.8	BGT06-M5						
	G1/8	BGT06-G01						
	G1/4	BGT06-G02	5.5	17	13.5	21	26.5	0.031
	G3/8	BGT06-G03						
8	G1/2	BGT06-G04						
	G1/8	BGT08-G01						
	G1/4	BGT08-G02	5.5	17	16	24.5	27	0.033
	G3/8	BGT08-G03						
10	G1/2	BGT08-G04						
	G1/8	BGT10-G01						
	G1/4	BGT10-G02						
	G3/8	BGT10-G03	5.5	20	16	24.5	31	0.045
12	G1/2	BGT10-G04						
	G1/4	BGT12-G02						
	G3/8	BGT12-G03	5.5	20	19	24.5	31	0.045
	G1/2	BGT12-G04						

BGT 19 N螺纹

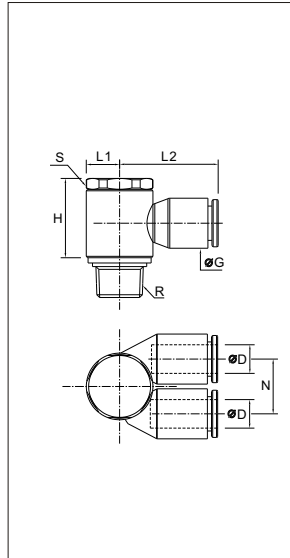


ØD	R	型号	S	ØG	H	L/2	Kg
1/8	10-32UNF	BGT1/8-U10					
	NPT1/8	BGT1/8-N01					
	NPT1/4	BGT1/8-N02					
	NPT3/8	BGT1/8-N03					
1/4	10-32UNF	BGT1/4-U10					
	NPT1/8	BGT1/4-N01	13	11	17	20	0.024
	NPT1/4	BGT1/4-N02					
	NPT3/8	BGT1/4-N03					
3/8	NPT1/8	BGT3/8-N01					
	NPT1/4	BGT3/8-N02					
	NPT3/8	BGT3/8-N03	20	16	24.5	31	0.045
	NPT1/2	BGT3/8-N04					
1/2	NPT1/4	BGT1/2-N02					
	NPT3/8	BGT1/2-N03	20	19	24.5	31	0.045
	NPT1/2	BGT1/2-N04					

快插式管接头 / ONE TOUCH FITTINGS

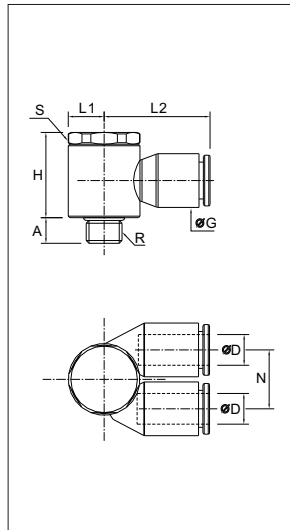
B 系列快速接头

BA 49 PT螺纹



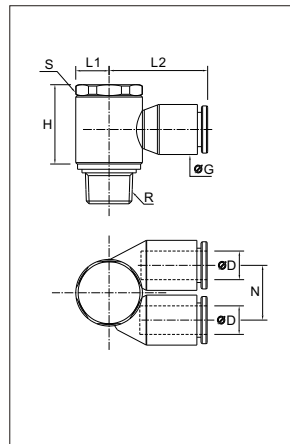
ØD	R	型号	S	ØG	H	L1	L2	N	Kg
4	R1/8	BA04-01							
	R1/4	BA04-02							
	R3/8	BA04-03							
6	R1/8	BA06-01							
	R1/4	BA06-02	17	13.5	21	9.5	27	14.5	0.034
	R3/8	BA06-03							
8	R1/2	BA06-04							
	R1/8	BA08-01							
	R1/4	BA08-02	17	16	21	9.5	27	14.5	0.034
10	R3/8	BA08-03							
	R1/2	BA08-04							
	R1/8	BA10-01							
12	R1/4	BA10-02	17	16	24.5	11	31	17	0.066
	R3/8	BA10-03							
	R1/2	BA10-04							
	R1/4	BA12-02							
	R3/8	BA12-03							
	R1/2	BA12-04							

BA 49 G螺纹



ØD	R	型号	A	S	ØG	H	L1	L2	N	Kg
4	M3x0.5	BA04-M3								
	M5x0.8	BA04-M5								
	G1/8	BA04-G01								
6	G1/4	BA04-G02								
	G3/8	BA04-G03								
	M5x0.8	BA06-M5								
8	G1/8	BA06-G01								
	G1/4	BA06-G02	5.5	17	13.5	21	9.5	27	14.5	0.034
	G3/8	BA06-G03								
10	G1/2	BA06-G04								
	G1/8	BA08-G01								
	G1/4	BA08-G02	5.5	17	16	21	9.5	27	14.5	0.034
12	G3/8	BA08-G03								
	G1/2	BA08-G04								
	G1/8	BA10-G01								
	G1/4	BA10-G02	5.5	17	16	24.5	11	31	17	0.066
	G3/8	BA10-G03								
	G1/2	BA10-G04								
	G1/4	BA12-G02								
	G3/8	BA12-G03								
	G1/2	BA12-G04								

BA 49 N螺纹

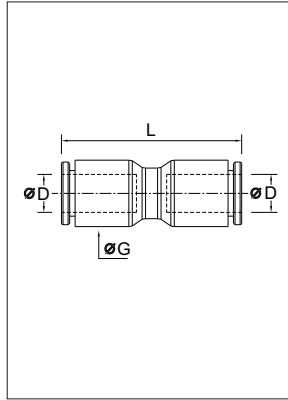


ØD	R	型号	S	ØG	H	L1	L2	N	Kg
1/8	10-32UNF	BA1/8-U10							
	NPT1/8	BA1/8-N01							
	NPT1/4	BA1/8-N02							
1/4	NPT3/8	BA1/8-N03							
	10-32UNF	BA1/4-U10							
	NPT1/8	BA1/4-N01	13	10.5	16.5	7	18.5	11.5	0.013
3/8	NPT1/4	BA1/4-N02							
	NPT3/8	BA1/4-N03							
	NPT1/8	BA3/8-N01							
1/2	NPT1/4	BA3/8-N02	17	16	24.5	11	31	17	0.066
	NPT3/8	BA3/8-N03							
	NPT1/2	BA3/8-N04							
	NPT1/4	BA1/2-N02							
	NPT3/8	BA1/2-N03							
	NPT1/2	BA1/2-N04							

快插式管接头 / ONE TOUCH FITTINGS

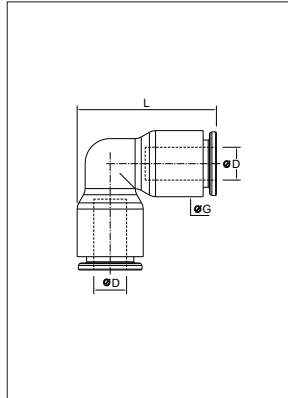
B 系列快速接头

BUC 06



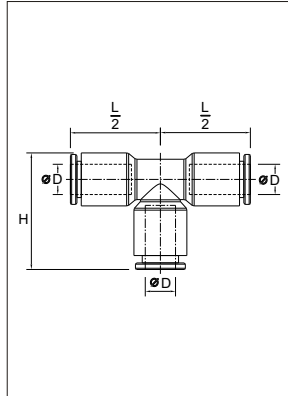
ØD	型号	ØG	L	Kg
3	BUC03	8.5	25	0.002
4	BUC04	8.5	25	0.002
6	BUC06	10.5	28.5	0.004
8	BUC08	13.5	38	0.007
10	BUC10	16	42	0.009
12	BUC12	19	50.5	0.015
1/8	BUC1/8	8.5	25	0.002
5/32	BUC5/32	8.5	25	0.002
1/4	BUC1/4	10.9	29.5	0.002
5/16	BUC5/16	13.5	38	0.007
3/8	BUC3/8	16	42	0.006
1/2	BUC1/2	22	55	0.015

BUL 02



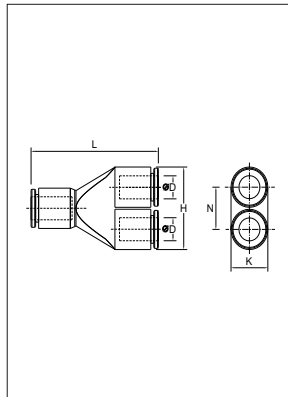
ØD	型号	ØG	L	Kg
3	BUL03	8.5	19	0.002
4	BUL04	8.5	19	0.004
6	BUL06	10.5	22.5	0.007
8	BUL08	13.5	29.5	0.015
10	BUL10	16	34.5	0.017
12	BUL12	19	40.5	0.045
1/8	BUL1/8	8.5	19	0.002
5/32	BUL5/32	8.5	19	0.002
1/4	BUL1/4	11	23.5	0.002
5/16	BUL5/16	13.5	29.5	0.015
3/8	BUL3/8	16	34	0.006
1/2	BUL1/2	22	35	0.018

BUT 04



ØD	型号	ØG	H	L/2	Kg
3	BUT03	8.5	19	14.5	0.004
4	BUT04	8.5	19	14.5	0.004
6	BUT06	10.5	22.5	17.5	0.006
8	BUT08	13.5	29.5	23	0.009
10	BUT10	16	34.5	26.5	0.014
12	BUT12	19	40.5	31	0.019
1/8	BUT1/8	8.4	19	14.5	0.003
5/32	BUT5/32	8.5	19	14.5	0.004
1/4	BUT1/4	11	23	24	0.003
5/16	BUT5/16	13.5	29.5	23	0.009
3/8	BUT3/8	16	34	26	0.009
1/2	BUT1/2	22	46	35	0.026

BY 40

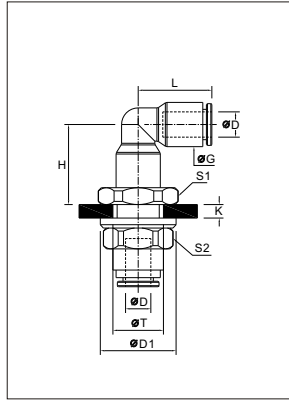


ØD	型号	H	K	L	N	Kg
3	BY03	17.5	8.5	28.5	9	0.004
4	BY04	17.5	8.5	28.5	9	0.004
6	BY06	21.5	10.5	35	11	0.007
8	BY08	28.5	13.5	45	14.5	0.013
10	BY10	33	16	53	17	0.020
12	BY12	39	19	57	17	0.025
1/8	BY1/8	17.5	8.5	28.5	9	0.004
5/32	BY5/32	17.5	8.5	28.5	9	0.004
1/4	BY1/4	21.5	11	35	11	0.007
5/16	BY5/16	28.5	13.5	45	14.5	0.013
3/8	BY3/8	39	16	53	17	0.020
1/2	BY1/2	46	22	60	17	0.028

快插式管接头 / ONE TOUCH FITTINGS

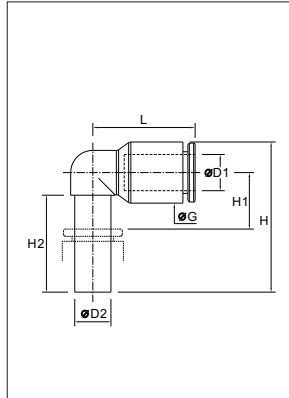
B 系列快速接头

BLM 39



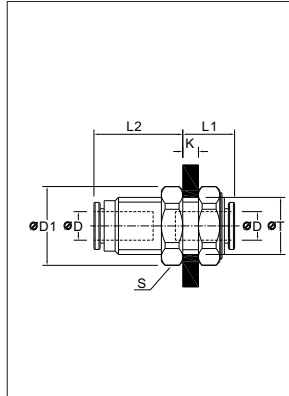
ØD	型号	S	ØG	H	K _{maxi}	L	T _{mini}	Kg
3	BLM03	13	8.5	17	6.5	14.5	10.5	0.019
4	BLM04	13	8.5	17	6.5	14.5	10.5	0.019
6	BLM06	15	10.5	19.5	7	17.5	12.5	0.024
8	BLM08	18	13.5	24	8	23	15.5	0.035
10	BLM10	22	16	28	8.5	26	18.5	0.081
12	BLM12	26	19	33	8.5	31	22.5	0.123
1/8	BLM1/8	13	8.5	17	6.5	14.5	10.5	0.019
5/32	BLM5/32	13	8.5	17	6.5	14.5	10.5	0.019
1/4	BLM1/4	15	10.5	19.5	7	17.5	12.5	0.024
5/16	BLM5/16	18	13.5	24	8	23	15.5	0.035
3/8	BLM3/8	22	16	28	8.5	26	18.5	0.081
1/2	BLM1/2	28	19	33	8.5	31	22.5	0.123

BLJ 82



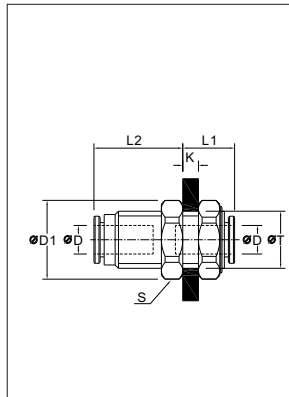
ØD1	ØD2	型号	ØG	H	H1	H2	L	Kg
3	3	BLJ03						
4	4	BLJ04						
6	6	BLJ06	10.5	26.5	7	17	16	0.003
8	8	BLJ08						
10	10	BLJ10						
12	12	BLJ12						
1/8	1/8	BLJ1/8						
5/32	5/32	BLJ5/32						
1/4	1/4	BLJ1/4						
5/16	5/16	BLJ5/16						
3/8	3/8	BLJ3/8						
1/2	1/2	BLJ1/2						

BMP 16



ØD	型号	S	K _{maxi}	L1	L2	T _{mini}	Kg
3	BMP03	13	5.5	15	10	10.5	0.018
4	BMP04	13	5.5	15	10	10.5	0.018
6	BMP06	15	8.5	18	10.5	12.5	0.029
8	BMP08	18	14.5	25	13.5	15.5	0.037
10	BMP10						
12	BMP12						
1/8	BMP1/8	13	5.5	15	10	10.5	0.018
5/32	BMP5/32	13	5.5	15	10	10.5	0.018
1/4	BMP1/4	15	8.5	18	10.5	12.5	0.029
5/16	BMP5/16	18	14.5	25	13.5	15.5	0.037
3/8	BMP3/8						
1/2	BMP1/2						

BMM 16

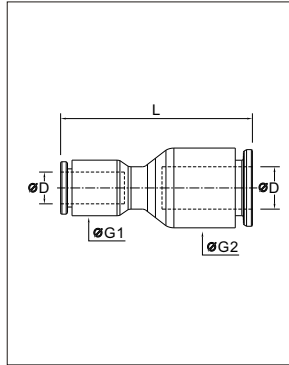


ØD	型号	S	K _{maxi}	L1	L2	T _{mini}	Kg
3	BMM03	13	5.5	15	10	10.5	0.018
4	BMM04	13	5.5	15	10	10.5	0.018
6	BMM06	15	8.5	18	10.5	12.5	0.029
8	BMM08	18	14.5	25	13.5	15.5	0.037
10	BMM10						
12	BMM12						
1/8	BMM1/8	13	5.5	15	10	10.5	0.018
5/32	BMM5/32	13	5.5	15	10	10.5	0.018
1/4	BMM1/4	15	8.5	18	10.5	12.5	0.029
5/16	BMM5/16	18	14.5	25	13.5	15.5	0.037
3/8	BMM3/8						
1/2	BMM1/2						

快插式管接头 / ONE TOUCH FITTINGS

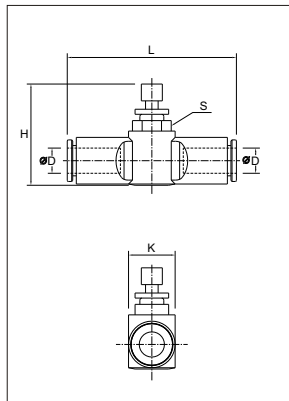
B 系列快速接头

BG 06



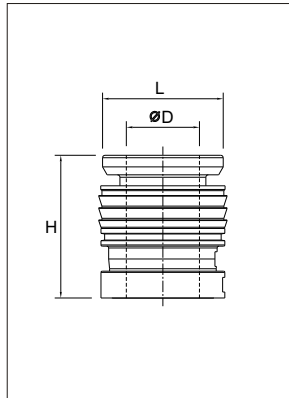
ØD1	ØD2	型号	ØG1	ØG2	L	Kg
6	4	BG 06-04	11	8.5	28	0.008
8	4	BG 08-04	13.5	13.5	38	0.010
8	6	BG 08-06	14	13.5	38	0.012
10	6	BG 10-06	16	16	42	0.018
10	8	BG 10-08	16	16	42	0.020
12	8	BG 12-08	19	19	50.5	0.031
12	10	BG 12-10	19	19	50.5	0.022
1/4	5/32	BG 1/4-5/32	11	10.9	29.5	0.010
5/16	1/4	BG 5/16-1/4	14	11	38	0.012
3/8	1/4	BG 3/8-1/4	16	11	41	0.016
3/8	5/16	BG 3/8-5/16	16	16	41	0.016
1/2	3/8	BG 1/2-3/8	22	16	55	0.016

BSF 04



ØD	型号	S	K	H	L	Kg
3	BSF 03	8	10	23.5	37	0.006
4	BSF 04	8	10	23.5	37	0.006
6	BSF 06	8	11.2	23.5	40.5	0.007
8	BSF 08					
10	BSF 10					
12	BSF 12					
1/8	BSF 1/8	8	10	23.5	37	0.006
5/32	BSF 5/32	8	10	23.5	37	0.006
1/4	BSF 1/4					
5/16	BSF 5/16					
3/8	BSF 3/8					
1/2	BSF 1/2					

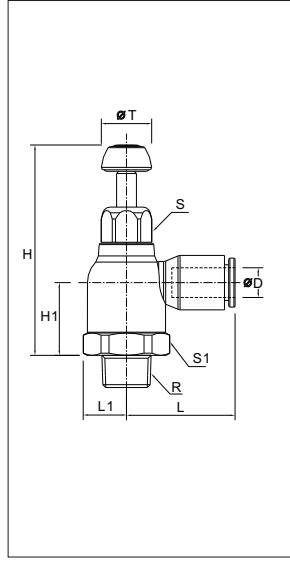
BOF 00



节流阀 / SPEED CONTROLLERS

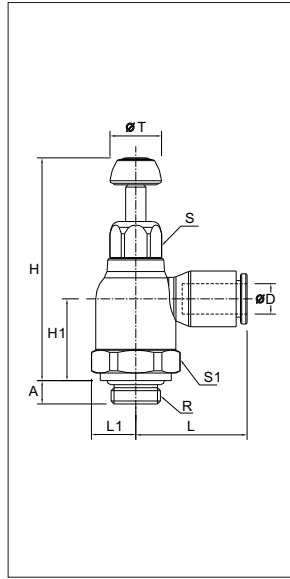
B 系列节流阀

BSE 065 PT螺纹



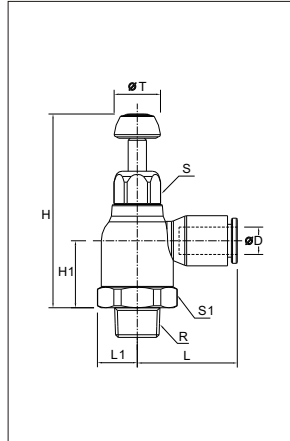
ØD	R	S	S1	H _{mini}	H _{maxi}	H1	L	L1	T	Kg
4	R1/8	10	16	36.5	42.5	14.5	22	9	10	0.021
	R1/4	10	16	36.5	42.5	14.5	22	9	10	0.021
	R3/8	10	16	36.5	42.5	14.5	22	9	10	0.021
6	R1/8	10	16	36.5	42.5	15	22	9	10	0.021
	R1/4	10	16	36.5	42.5	15	22	8	10	0.021
	R3/8	10	16	36.5	42.5	15	22	9	10	0.021
8	R1/2	10	16	36.5	42.5	15	22	9	10	0.021
	R1/8	14	19	40	45	16.5	27	10.5	14	0.034
	R1/4	14	19	40	45	16.5	27	10.5	14	0.036
10	R3/8	14	19	40	45	16.5	27	11	14	0.042
	R1/2	14	19	40	45	16.5	27	11	14	0.042
	R1/8	17	23	43.5	51.5	18	31.5	12.5	17	0.053
12	R1/4	17	23	43.5	51.5	18	31.5	12.5	17	0.053
	R3/8	17	23	43.5	51.5	18	31.5	12.5	17	0.055
	R1/2	17	23	43.5	51.5	18	31.5	12.5	17	0.059

BSE 060 G螺纹



ØD	R	A	S	S1	H _{mini}	H _{maxi}	H1	L	L1	T	Kg
4	G1/8	5	10	16	38	44	16	22	9	10	0.021
	G1/4	5.5	10	16	38	44	16	22	9	10	0.021
	G3/8	5.5	10	16	38	44	16	22	9	10	0.021
6	M5x0.8	4.5	10	16	38	44	16	22	9	12	0.021
	G1/8	4.5	10	16	38	44	16	22	9	12	0.021
	G1/4	5.5	10	16	36.5	42.5	15	22	9	12	0.021
8	G3/8	5.5	10	16	36.5	42.5	15	22	9	12	0.021
	G1/2	5.5	10	16	36.5	42.5	15	22	9	12	0.021
	G1/8	5.5	14	19	41.5	48	18	28	10.5	17	0.035
10	G1/4	5.5	14	19	41.5	48	18.5	28	10.5	17	0.037
	G3/8	5.5	14	19	41.5	48	17	28	11	17	0.037
	G1/2	5.5	14	19	41.5	48	17	28	11	17	0.037
12	G1/8	5.5	17	23	45.5	53.5	20	31.5	12.5	17	0.057
	G1/4	5.5	17	23	45.5	53.5	20	31.5	12.5	17	0.057
	G3/8	5.5	17	23	45.5	54	20	31.5	12.5	17	0.059

BSE 065 N螺纹

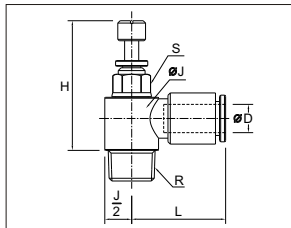


ØD	R	S	S1	H _{mini}	H _{maxi}	H1	L	L1	T	Kg
1/8	10-32UNF	11	16	36.5	42.5	14.5	22	9	10	0.021
	NPT1/4	11	16	36.5	42.5	14.5	22	9	10	0.021
	NPT3/8	11	16	36.5	42.5	14.5	22	9	10	0.021
1/4	NPT1/2	11	16	36.5	42.5	14.5	22	9	10	0.021
	10-32UNF	11	16	36.5	42.5	15	22	9	10	0.021
	NPT1/8	11	16	36.5	42.5	15	22	9	10	0.021
3/8	NPT1/4	11	16	36.5	42.5	15	22	8	10	0.021
	NPT3/8	11	16	36.5	42.5	15	22	9	10	0.021
	NPT1/8	18.5	23	43.5	51.5	18	31.5	12.5	17	0.053
1/2	NPT1/4	18.5	23	43.5	51.5	18	31.5	12.5	17	0.053
	NPT3/8	18.5	23	43.5	51.5	18	31.5	12.5	17	0.055
	NPT1/2	18.5	23	43.5	51.5	18	31.5	12.5	17	0.059

节流阀 / SPEED CONTROLLERS

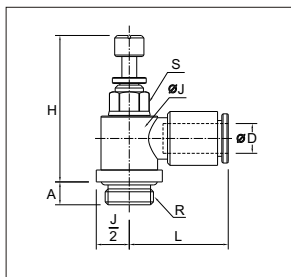
B 系列节流阀

BSE 665 PT螺纹



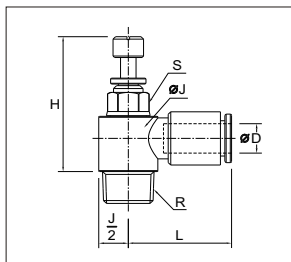
ØD	R	S	H mini	H maxi	J	L	Kg
3	R1/8	7	25	27.5	11.5	18	0.011
	R1/8	7	25	27.5	11.5	18	0.011
4	R1/4	7	25	27.5	11.5	18	0.011
	R3/8	7	25	27.5	11.5	18	0.011
6	R1/8	7	25	27.5	11.5	19	0.012
	R1/4	8	27.5	30	13.5	19	0.019

BSE 660 G螺纹



ØD	R	A	S	H mini	H maxi	J	L	Kg
3	G1/8	5	7	23.5	29.5	11.5	18	0.012
	M3x0.5	5	6	23.5	26	9	16.5	0.007
	M5x0.8	5	6	23.5	26	9	17	0.008
4	G1/8	5	7	23.5	29.5	11.5	18	0.012
	G1/4	5.5	7	23.5	29.5	12	18	0.012
	G3/8	5.5	7	23.5	29.5	12	18	0.012
	M5x0.8	4.5	6	23.5	26	9	18	0.010
6	G1/8	4.5	7	27	29.5	11.5	18.5	0.012
	G1/4	5.5	8	30	32.5	12	19	0.019

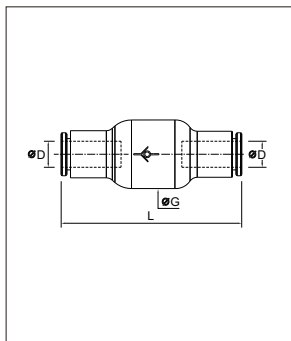
BSE 665 N螺纹



ØD	R	S	H mini	H maxi	J	L	Kg
1/8	10-32UNF	6	23.5	26	11.5	17	0.008
	NPT1/8	8	25	27.5	11.5	18	0.011
	NPT1/4	8	25	27.5	11.5	18	0.011
	NPT3/8	8	25	27.5	11.5	18	0.011
1/4	10-32UNF	6	23.5	26	11.5	18	0.010
	NPT1/8	7	25	27.5	11.5	19	0.012
	NPT1/4	8	27.5	30	13.5	19	0.019

B 系列单向阀

BCVU 96

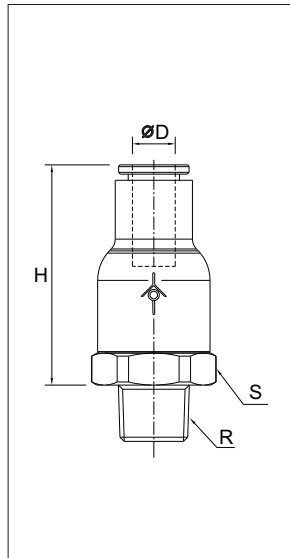


ØD	型号	ØG	L	Kg
4	BCVU9604			
6	BCVU9606	10.5	22.5	0.007
8	BCVU9608			
10	BCVU9610			
12	BCVU9612			
1/8	BCVU961/8			
5/32	BCVU965/32			
1/4	BCVU961/4			
5/16	BCVU965/16			
3/8	BCVU963/8			
1/2	BCVU961/2			

单向阀 / NON-RETURN VALVES

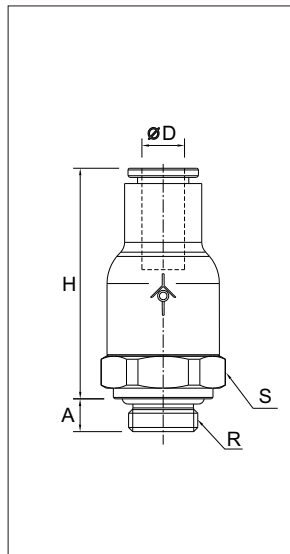
B 系列单向阀

BCVU 85 PT螺纹



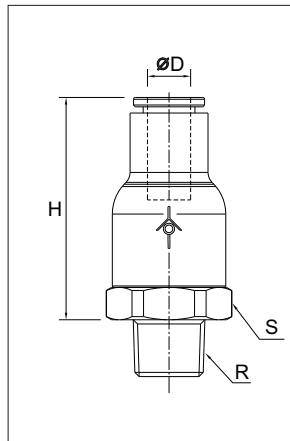
ØD	R	型号	S	H	Kg
4	R1/8	BCVU85 04 -01			
	R1/4	BCVU85 04 -02			
	R3/8	BCVU85 04 -03			
6	R1/8	BCVU85 06 -01	16	30.5	0.016
	R1/4	BCVU85 06 -02	16	30.5	0.021
	R3/8	BCVU85 06 -03			
8	R1/2	BCVU85 06 -04			
	R1/8	BCVU85 08 -01			
	R1/4	BCVU85 08 -02			
10	R3/8	BCVU85 08 -03			
	R1/2	BCVU85 08 -04			
	R1/8	BCVU85 10 -01			
12	R1/4	BCVU85 10 -02			
	R3/8	BCVU85 10 -03			
	R1/2	BCVU85 10 -04			
	R1/4	BCVU85 12 -02			
	R3/8	BCVU85 12 -03			
	R1/2	BCVU85 12 -04			

BCVU 84 G螺纹



ØD	R	型号	A	S	H	Kg
4	G1/8	BCVU84 04 -G01				
	G1/4	BCVU84 04 -G02				
	G3/8	BCVU84 04 -G03				
6	M5 x 0.8	BCVU84 06 -M5				
	G1/8	BCVU84 06 -G01	5	16	30.5	0.021
	G1/4	BCVU84 06 -G02	5.5	16	30.5	0.023
	G3/8	BCVU84 06 -G03				
	G1/2	BCVU84 06 -G04				
8	G1/8	BCVU84 08 -G01				
	G1/4	BCVU84 08 -G02				
	G3/8	BCVU84 08 -G03				
	G1/2	BCVU84 08 -G04				
10	G1/8	BCVU84 10 -G01				
	G1/4	BCVU84 10 -G02				
	G3/8	BCVU84 10 -G03				
	G1/2	BCVU84 10 -G04				
12	G1/4	BCVU84 12 -G02				
	G3/8	BCVU84 12 -G03				
	G1/2	BCVU84 12 -G04				

BCVU 85 N螺纹

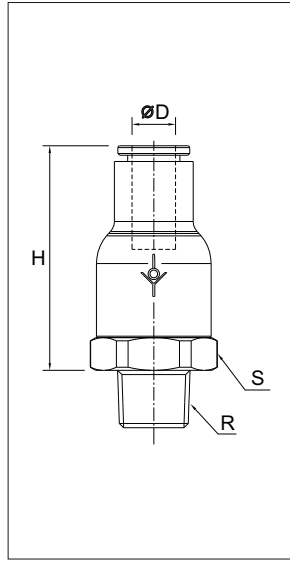


ØD	R	型号	S	H	Kg
1/8	10 -32UNF	BCVU85 1/8 -U10			
	NPT1/8	BCVU85 1/8 -N01			
	NPT1/4	BCVU85 1/8 -N02			
1/4	NPT3/8	BCVU85 1/8 -N03			
	10 -32UNF	BCVU85 1/4 -U10			
	NPT1/8	BCVU85 1/4 -N01			
3/8	NPT1/4	BCVU85 1/4 -N02			
	NPT3/8	BCVU85 1/4 -N03			
	NPT1/8	BCVU85 3/8 -N01			
1/2	NPT1/4	BCVU85 3/8 -N02			
	NPT3/8	BCVU85 3/8 -N03			
	NPT1/2	BCVU85 3/8 -N04			
	NPT1/4	BCVU85 1/2 -N02			
	NPT3/8	BCVU85 1/2 -N03			
	NPT1/2	BCVU85 1/2 -N04			

单向阀 / NON-RETURN VALVES

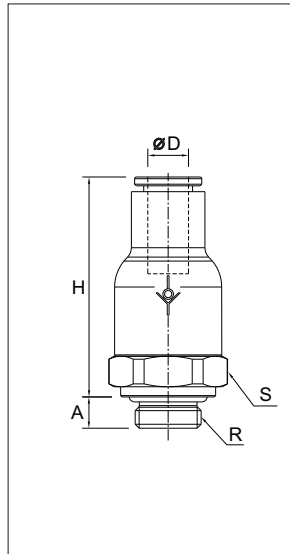
B 系列单向阀

BCVU 95 PT螺纹



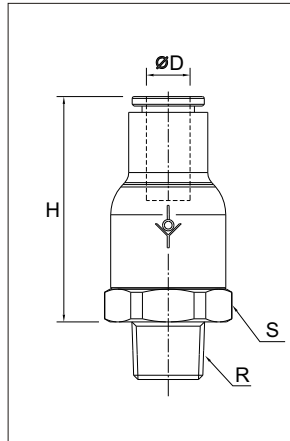
ØD	R	型号	S	H	Kg
4	R1/8	BCVU95 04 -01			
	R1/4	BCVU95 04 -02			
	R3/8	BCVU95 04 -03			
6	R1/8	BCVU95 06 -01	16	30.5	0.016
	R1/4	BCVU95 06 -02	16	30.5	0.021
	R3/8	BCVU95 06 -03			
8	R1/2	BCVU95 06 -04			
	R1/8	BCVU95 08 -01			
	R1/4	BCVU95 08 -02			
10	R3/8	BCVU95 08 -03			
	R1/2	BCVU95 08 -04			
	R1/8	BCVU95 10 -01			
12	R1/4	BCVU95 10 -02			
	R3/8	BCVU95 10 -03			
	R1/2	BCVU95 10 -04			
	R1/4	BCVU95 12 -02			
	R3/8	BCVU95 12 -03			
	R1/2	BCVU95 12 -04			

BCVU 94 G螺纹



ØD	R	型号	A	S	H	Kg
4	G1/8	BCVU94 04 -G01				
	G1/4	BCVU94 04 -G02				
	G3/8	BCVU94 04 -G03				
6	M5 x 0.8	BCVU94 06 -M5				
	G1/8	BCVU94 06 -G01	5	16	30.5	0.021
	G1/4	BCVU94 06 -G02	5.5	16	30.5	0.023
	G3/8	BCVU94 06 -G03				
	G1/2	BCVU94 06 -G04				
8	G1/8	BCVU94 08 -G01				
	G1/4	BCVU94 08 -G02				
	G3/8	BCVU94 08 -G03				
	G1/2	BCVU94 08 -G04				
10	G1/8	BCVU94 10 -G01				
	G1/4	BCVU94 10 -G02				
	G3/8	BCVU94 10 -G03				
	G1/2	BCVU94 10 -G04				
12	G1/4	BCVU94 12 -G02				
	G3/8	BCVU94 12 -G03				
	G1/2	BCVU94 12 -G04				

BCVU 95 N螺纹



ØD	R	型号	S	H	Kg
1/8	10 -32UNF	BCVU95 1/8-U10			
	NPT1/8	BCVU95 1/8-N01			
	NPT1/4	BCVU95 1/8-N02			
1/4	NPT3/8	BCVU95 1/8-N03			
	10 -32UNF	BCVU95 1/4-U10			
	NPT1/8	BCVU95 1/4-N01			
3/8	NPT1/4	BCVU95 1/4-N02			
	NPT3/8	BCVU95 1/4-N03			
	NPT1/8	BCVU95 3/8-N01			
1/2	NPT1/4	BCVU95 3/8-N02			
	NPT3/8	BCVU95 3/8-N03			
	NPT1/2	BCVU95 3/8-N04			
	NPT1/4	BCVU95 1/2-N02			
	NPT3/8	BCVU95 1/2-N03			
	NPT1/2	BCVU95 1/2-N04			